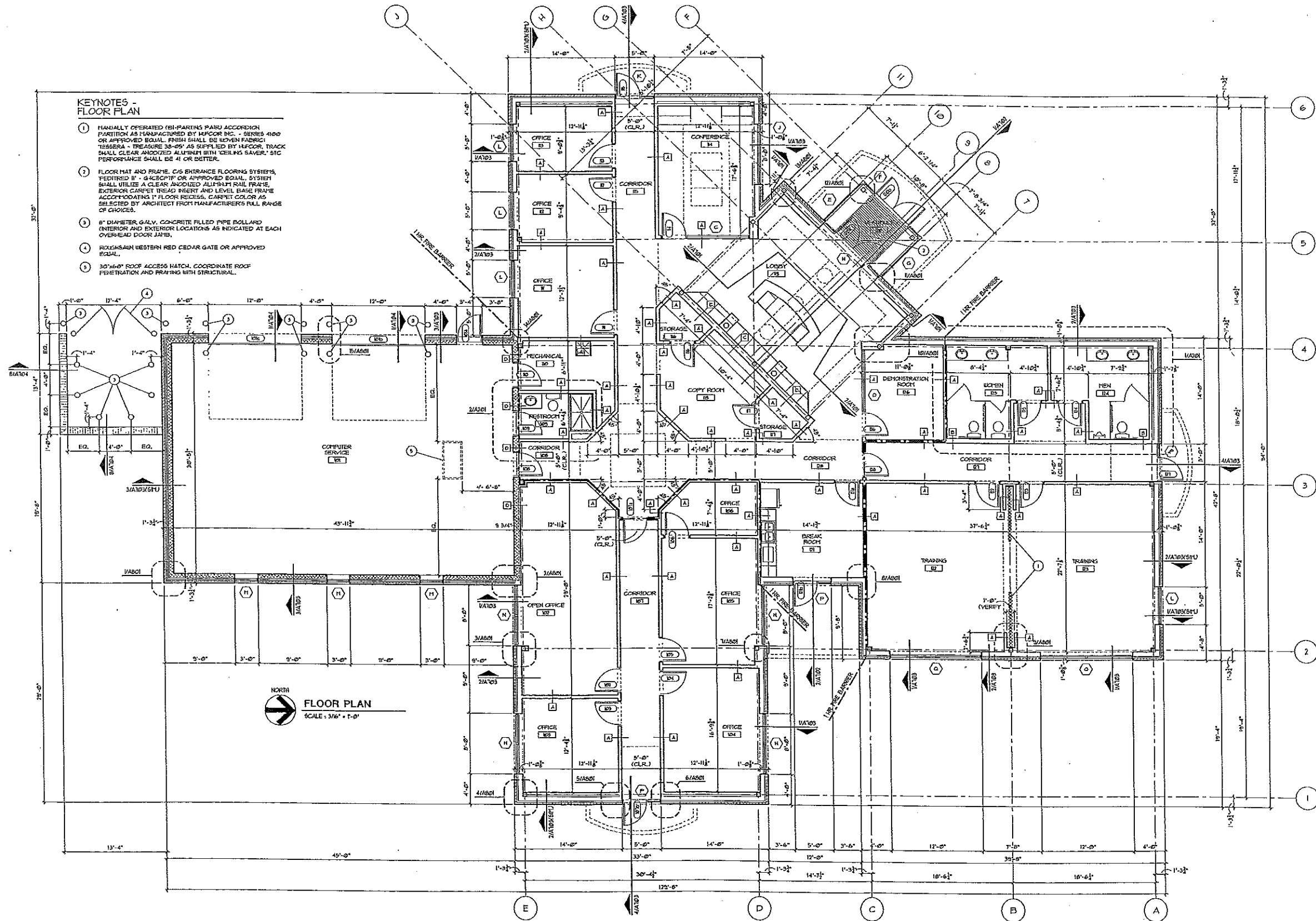


KEYNOTES - FLOOR PLAN

1. MANUALLY OPERATED (BI-PARTING PANEL) ACCORDION PARTITION AS MANUFACTURED BY HFCOR INC. - SERIES 4100 OR APPROVED EQUAL. FINISH SHALL BE WOVEN FABRIC; TESSERA - TREASURE 38-89" AS SUPPLIED BY HFCOR. TRACK SHALL CLEAR ANODIZED ALUMINUM WITH CEILING SAVERS. STC PERFORMANCE SHALL BE 41 OR BETTER.
2. FLOOR MAT AND FRAME, C/S ENTRANCE FLOORING SYSTEMS, FETTERED 1" - G43C0PT1" OR APPROVED EQUAL, SYSTEM SHALL UTILIZE A CLEAR ANODIZED ALUMINUM RAIL FRAME, EXTERIOR CARPET TREAD HEIGHT AND LEVEL BASE FRAME ACCOMMODATING 1" FLOOR RECESS. CARPET COLOR AS SELECTED BY ARCHITECT FROM MANUFACTURERS FULL RANGE OF CHOICES.
3. 6" DIAMETER GALV. CONCRETE FILLED PIPE BOLLARD INTERIOR AND EXTERIOR LOCATIONS AS INDICATED AT EACH OVERHEAD DOOR JAMB.
4. ROUGHSAWN WESTERN RED CEDAR GATE OR APPROVED EQUAL.
5. 30"x60" ROOF ACCESS HATCH. COORDINATE ROOF PENETRATION AND FRAMING WITH STRUCTURAL.



FLOOR PLAN
SCALE: 3/16" = 1'-0"

SCOPE DOCUMENT
THIS DOCUMENT IS THE PROPERTY OF MECA DESIGN GROUP. IT IS TO BE USED ONLY FOR THE PROJECT AND SITE SPECIFICALLY IDENTIFIED HEREIN. IT IS NOT TO BE REPRODUCED, COPIED, OR TRANSMITTED IN ANY FORM OR BY ANY MEANS, ELECTRONIC OR MECHANICAL, INCLUDING PHOTOCOPYING, RECORDING, OR BY ANY INFORMATION STORAGE AND RETRIEVAL SYSTEM, WITHOUT THE WRITTEN PERMISSION OF MECA DESIGN GROUP.

MECA DESIGN GROUP
3741
DATE: 4/29/04
CERTIFIED BY: [Signature]

MECA design group
ARCHITECTS
531 East County Line Road, Suite A, Greenwood, Indiana 46143
Phone: 317.881.1470 www.meca-design.com Fax: 317.882.4083
© 2004 MECA design group

FLOOR PLAN
VERSACOM
OFFICE BUILDING
GREENWOOD, INDIANA

Sheet Title: FLOOR PLAN
Project Title: VERSACOM OFFICE BUILDING
Date: 4/29/04
Project No: 04106
Drawn By: DCC
Checked By: MEC

A101